

the metal centre

aluminium rolled products

**The Metal Centre
Western Way
Wednesbury
WS10 7BW**

tel: +44 (0) 121 352 7200
fax: +44 (0) 121 352 7330

email: sales@themetalcontre.com
www.themetalcontre.com

STOCKHOLDER SALES

tel: +44 (0) 121 352 7200
fax: +44 (0) 121 352 7330

ADMINISTRATION

tel: +44 (0) 121 352 7300
fax: +44 (0) 121 352 7333

LOGISTICS

tel: +44 (0) 121 352 7303
fax: +44 (0) 121 352 7335

ACCOUNTING CENTRE

tel: +44 (0) 121 352 7304
fax: +44 (0) 121 352 7336

All weights shown in this publication are for guidance only. They are calculated using nominal dimensions and are scientifically recognised densities. Please note that in practice, the actual weight can vary significantly from the theoretical weight due to variations in manufacturing tolerances and compositions.

The information contained herein is based on our present knowledge and experience and is given in good faith. However, no liability will be accepted by the Company in respect of any action taken by any third party in reliance thereon.

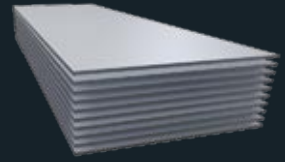
As the products detailed herein may be used for a wide variety of purposes and as the Company has no control over their use, the Company specifically excludes all conditions and warranties expressed or implied by statute or otherwise as to dimensions, properties and/or their fitness for any particular purpose. Any advice given by the Company to any third party is given for that party's assistance only and without any liability on the part of the Company.

Any contract between the Company and the customer will be subject to the Company's Conditions of Sale. The extent of the Company's liabilities to any customer is clearly set out in those Conditions; a copy of which is available on request.

Size (mm)	Weight per sheet (Kg)
2000 x 1000 x 0.5	2.71
2500 x 1250 x 0.5	4.23
2000 x 1000 x 0.6	3.25
2500 x 1250 x 0.6	5.08
2000 x 1000 x 0.7	3.83
2500 x 1250 x 0.7	5.08
2000 x 1000 x 0.8	4.34
2500 x 1250 x 0.8	6.78
2000 x 1000 x 1.0	5.42
2500 x 1250 x 1.0	8.47
3000 x 1250 x 1.0	10.20
2000 x 1000 x 1.2	6.50
2500 x 1250 x 1.2	10.20
3000 x 1250 x 1.2	12.20
3000 x 1500 x 1.2	14.60
2000 x 1000 x 1.5	8.13
2500 x 1000 x 1.5*	10.16
2500 x 1250 x 1.5*	12.70
2500 x 1500 x 1.5	15.24
3000 x 1000 x 1.5	12.20
3000 x 1250 x 1.5*	15.20
3000 x 1500 x 1.5*	18.30
3100 x 1000 x 1.5	12.60
3250 x 1250 x 1.5	16.51
3500 x 1250 x 1.5	17.78
3750 x 1250 x 1.5	19.05
4000 x 1500 x 1.5	24.39
2000 x 1000 x 2.0*	10.80
2500 x 1000 x 2.0	13.55
2500 x 1250 x 2.0*	16.90
2500 x 1500 x 2.0*	20.33
2500 x 1600 x 2.0	21.68
2500 x 1750 x 2.0	23.71
3000 x 1000 x 2.0	16.30
3000 x 1250 x 2.0*	20.30
3000 x 1400 x 2.0	22.76
3000 x 1500 x 2.0	24.40
3000 x 1600 x 2.0	26.02
3000 x 1750 x 2.0	28.46
3000 x 2000 x 2.0	32.52
3100 x 1250 x 2.0	21.00
3100 x 1500 x 2.0	25.20
3250 x 1250 x 2.0	22.02
3250 x 1500 x 2.0	26.42

Size (mm)	Weight per sheet (Kg)
3500 x 1250 x 2.0	23.71
3500 x 1500 x 2.0	28.46
3750 x 1250 x 2.0	25.41
3750 x 1500 x 2.0	30.49
4000 x 1000 x 2.0	21.73
4000 x 1250 x 2.0	27.17
4000 x 1400 x 2.0	43.36
4000 x 1500 x 2.0	32.60
4000 x 1600 x 2.0	34.69
4000 x 1750 x 2.0	37.94
4000 x 2000 x 2.0	43.79*
2000 x 1000 x 2.5	13.60
2500 x 1250 x 2.5	21.20
3000 x 1500 x 2.5	30.50
2000 x 1000 x 3.0*	16.30
2500 x 1000 x 3.0	20.33
2500 x 1250 x 3.0*	25.40
2500 x 1500 x 3.0	30.49
2500 x 1600 x 3.0	32.52
2500 x 1750 x 3.0	35.57
3000 x 1000 x 3.0	24.40
3000 x 1250 x 3.0	30.50
3000 x 1400 x 3.0	34.15
3000 x 1500 x 3.0	36.60
3000 x 1600 x 3.0	39.02
3000 x 1750 x 3.0	42.68
3000 x 2000 x 3.0	48.78
3100 x 1250 x 3.0	31.50
3100 x 1500 x 3.0	37.80
3250 x 1250 x 3.0	33.03
3250 x 1500 x 3.0	39.63
3500 x 1250 x 3.0	35.57
3500 x 1500 x 3.0	42.68
3750 x 1250 x 3.0	38.01
3750 x 1500 x 3.0	45.73
4000 x 1000 x 3.0	32.53
4000 x 1250 x 3.0	40.66
4000 x 1400 x 3.0	45.53
4000 x 1500 x 3.0	48.80
4000 x 1600 x 3.0	52.03
4000 x 1750 x 3.0	56.91
4000 x 2000 x 3.0*	65.00

*Also stock coated one side.

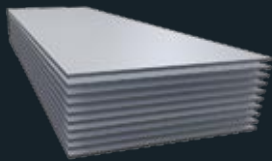


SHEET

Alloy 1050-H14

We have in-house facilities for Plastic Coating to suit your requirements

aluminium rolled products



SHEET
Other alloys

Size (mm)	Alloys –	5251-H22	3103-H14	4015-H12	6082-T651	5083-H111
2000 x 1000 x 1.0		✓				
2500 x 1250 x 1.0		✓				
2000 x 1000 x 1.2		✓				
2500 x 1250 x 1.2		✓		✓		
3000 x 1500 x 1.2				✓		
2000 x 1000 x 1.5		✓*		✓		
2500 x 1250 x 1.5		✓*	✓	✓		✓
3000 x 1500 x 1.5		✓		✓		
2000 x 1000 x 2.0		✓*		✓		
2500 x 1250 x 2.0		✓*	✓	✓	✓	✓
3000 x 1250 x 2.0		✓				
3000 x 1500 x 2.0		✓		✓		
2000 x 1000 x 2.5		✓				
2500 x 1250 x 2.5		✓		✓		
2438 x 1219 x 2.83				✓		
2000 x 1000 x 3.0		✓*				
2500 x 1250 x 3.0		✓*	✓	✓	✓	✓
3000 x 1250 x 3.0			✓			
3000 x 1500 x 3.0		✓		✓		

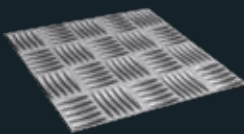
**Also stock coated one side*



STUCCO SHEET
Alloy 1050-H14

Size (mm)	Weight per sheet (Kg)
2000 x 1000 x 0.5	2.71
2500 x 1250 x 0.5	4.23
2000 x 1000 x 0.6	3.25
2500 x 1250 x 0.6	5.08
2000 x 1000 x 0.7	3.79

Size (mm)	Weight per sheet (Kg)
2500 x 1250 x 0.7	5.93
2000 x 1000 x 0.8	4.34
2500 x 1250 x 0.8	6.78
2500 x 1250 x 1.0	8.47
2500 x 1250 x 1.2	10.20



5 BAR TREADPLATE
Alloy 5754-H111

Size (mm)	Weight per sheet (Kg)
2438 x 1219 x 2.0	16.8
2500 x 1250 x 2.0	17.6
3000 x 1500 x 2.0	25.3
2000 x 1000 x 3.0	16.7
2438 x 1219 x 3.0	24.8
2500 x 1250 x 3.0	26.0

Size (mm)	Weight per sheet (Kg)
3000 x 1500 x 3.0	37.5
2438 x 1219 x 4.5	37.6
2500 x 1250 x 4.5	39.5
3000 x 1500 x 4.5	56.29
2438 x 1219 x 6.0	50.6
2500 x 1250 x 6.0	53.2
3000 x 1500 x 6.0	76.6
2000 x 1000 x 4.5	25.02

Product Code	Size (mm)	Approximate weight per plate (Kg)
ATG15	2500 x 1250 x 1.5	13.2
ATG20	2500 x 1250 x 2.0	16.8
ATG30	2500 x 1250 x 3.0	26.1

We can split packs of SHATE & PLATE in grades 5083-0 & 6082-T6

Size (mm) (Kg)	Weight per sheet
2500 x 1250 x 0.9	7.62
2500 x 1250 x 1.2	10.20
2500 x 1250 x 1.5	12.78
2500 x 1250 x 2.0	15.50

Type 1050

Size (mm)	Weight per sheet (Kg)
2500 x 1250 x 4.0	33.9
2500 x 1250 x 5.0	42.3
2000 x 1000 x 6.0	32.8
2500 x 1250 x 6.0	50.8

Type 6082

Size (mm)	Weight per sheet (Kg)
2500 x 1250 x 4.0	33.9
2500 x 1250 x 5.0	42.3
2500 x 1250 x 6.0	50.8
2500 x 1250 x 8.0	67.8

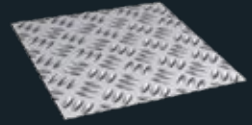
Grade 5251

Size (mm)	Weight per sheet (Kg)
2000 x 1000 x 4.0	21.6 kgs
2500 x 1250 x 4.0	33.7 kgs
3000 x 1500 x 4.0	48.6 kgs
2000 x 1000 x 5.0	27.0 kgs
2500 x 1250 x 5.0	42.1 kgs
3000 x 1500 x 5.0	60.7 kgs
2000 x 1000 x 6.0	32.4 kgs
2500 x 1250 x 6.0	50.6 kgs
3000 x 1500 x 6.0	72.9 kgs

5083-0/H111

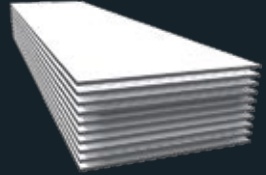
Size (mm) (kg)	Weight per plate
2500 x 1250 x 4.0	33.90
2500 x 1250 x 5.0	42.34
2500 x 1250 x 6.0	50.78

Size (mm)	Weight per plate (kg)	5083-0	6082-T651
2500 x 1250 x 8.0	67.81	✓	✓
2500 x 1250 x 10.0	84.68	✓	✓
2500 x 1250 x 12.0	101.56	✓	✓
2500 x 1250 x 15.0	127.18	✓	
2500 x 1250 x 20.0	169.37	✓	
2500 x 1250 x 25.0	211.77	✓	



TRIPLEGRIP (ATG)

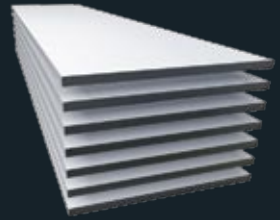
Aluminium Treadplate
Alloy 5052H32



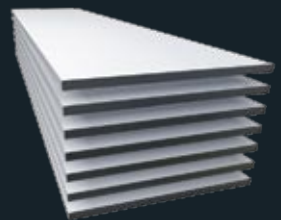
SHEET –

White Painted

3105-H46/3003-H45



SHATE



PLATE

Alloys 6082-T651

5083-0

6082-T6